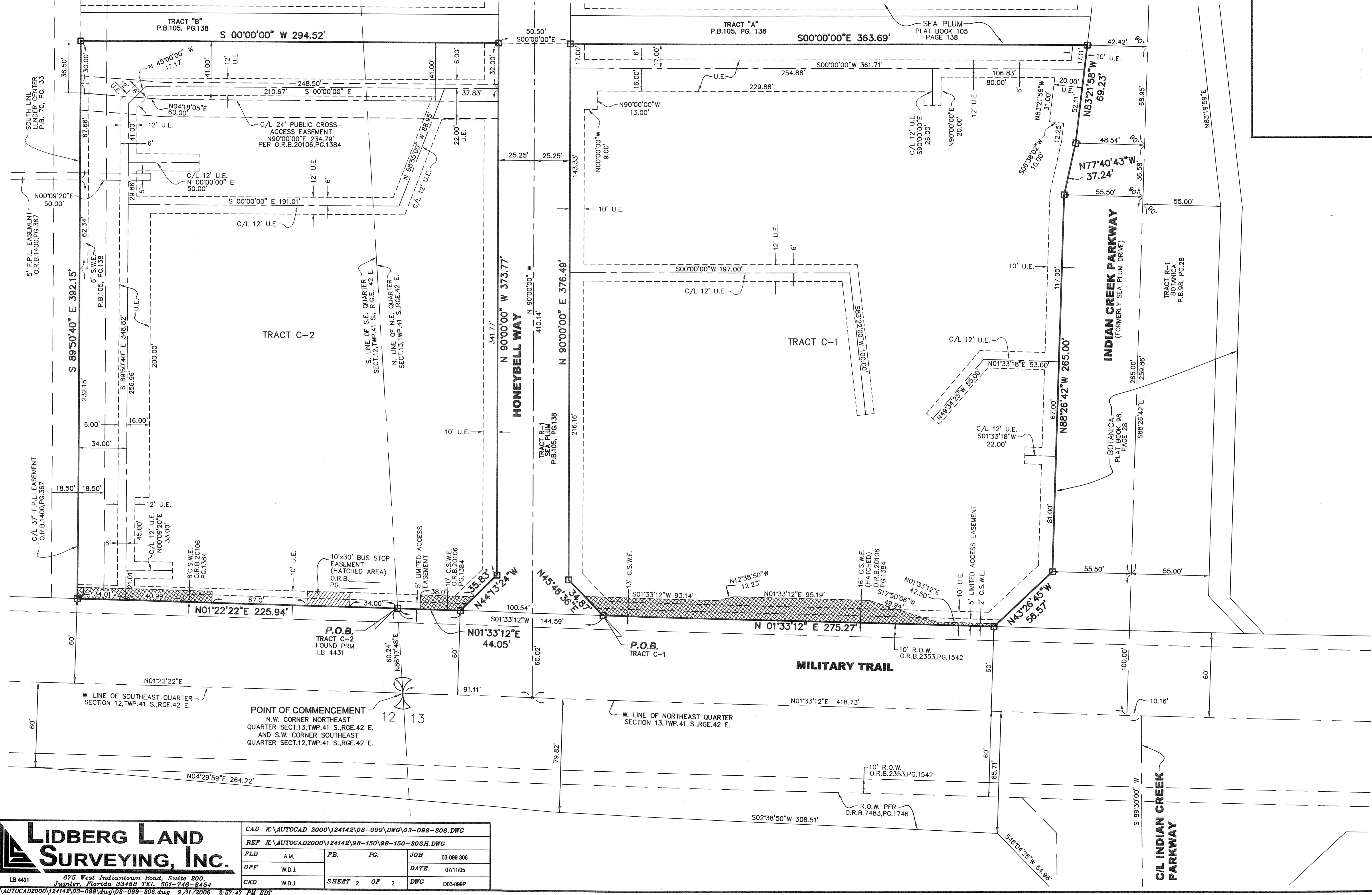
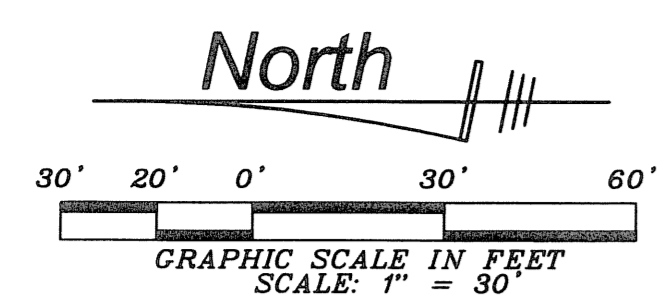


# SEA PLUM TOWN CENTER

BEING A REPLAT OF A TRACTS C-1 AND C-2, SEA PLUM, AS RECORDED IN PLAT BOOK 105, PAGES 138 - 144, PUBLIC RECORDS OF PALM BEACH COUNTY, FLORIDA,  
 LYING IN SECTIONS 12 AND 13, TOWNSHIP 41 SOUTH, RANGE 42 EAST, TOWN OF JUPITER, PALM BEACH COUNTY, FLORIDA  
 MAY, 2006 SHEET 2 OF 2



**LIDBERG LAND SURVEYING, INC.**  
 675 West Indiantown Road, Suite 200,  
 Jupiter, Florida 33458 TEL. 561-746-8454  
 LB 4431

CAD K:\AUTOCAD 2000\124142\03-099.DWG\03-099-306.DWG			
REF K:\AUTOCAD2000\124142\98-150\98-150-303H.DWG			
PLD	AM.	FB.	PC.
OFF	W.D.J.		
CKD	W.D.J.	SHEET 2 OF 2	DWG 003-099P
JOB 03-099-306		DATE 07/11/05	